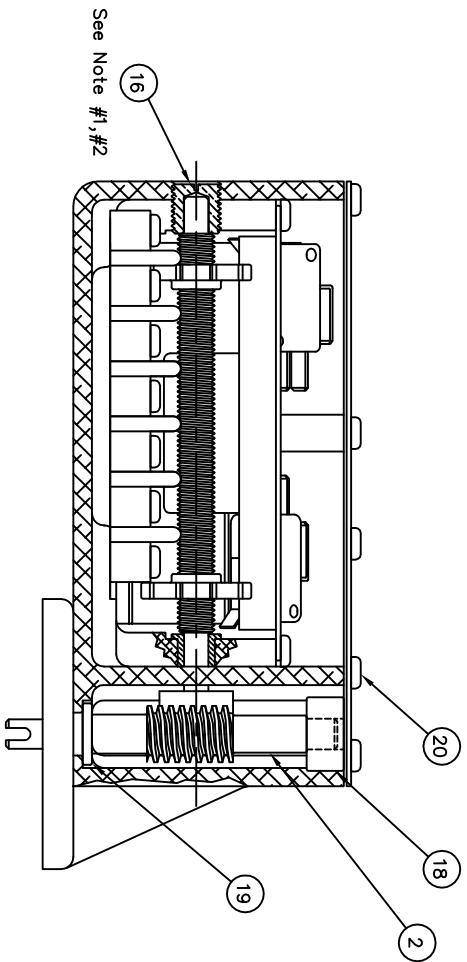
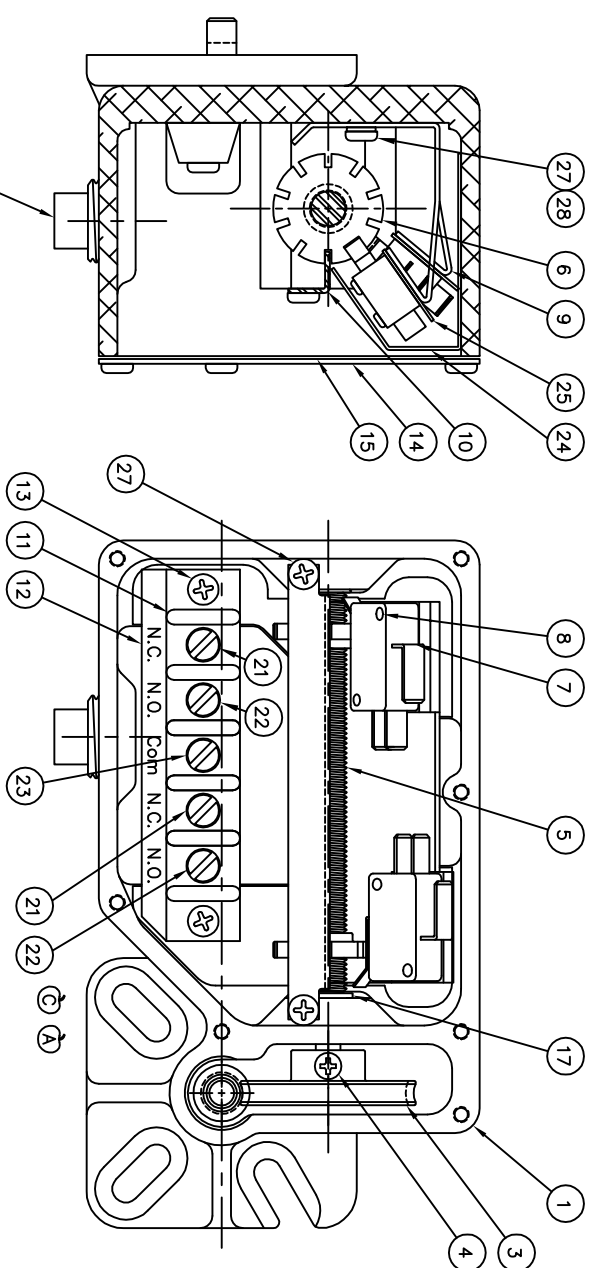
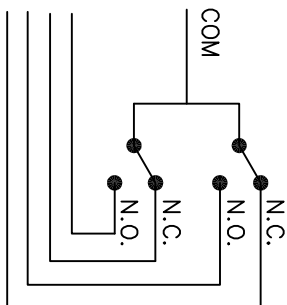


REV	ESH	DESCRIPTION	DATE	BY
A	04553	CHANGED ITEMS 4, 8, & 13. ADDED ITEM 29.	12/08/04	BG
B	06242	REMOVED SPOT FACES	08/24/08	CMT
C	10054	ADDED LUBRICATION NOTE	02/05/10	CMT
D	10282	ADDED SPOTFACE, UPDATED WIRING INFORMATION	08/06/10	CMT
		PERMATEX RTV BLUE WAS LOCITE 242		



Note #1) DO NOT OVER TIGHTEN ITEM #16 (08040097), TIGHTEN TO MINIMIZE AXIAL ENDPLAY.
 #2) USE PERMATEX RTV BLUE ON THREADS, ITEM #16(08040097) AT ASSEMBLY.
 #3) LUBRICATE STANDARD ASSEMBLY WITH LUBRIPLATE GR-132 GREASE.

ITEM NO.	QTY	DESCRIPTION	PART NO.	NAME
28	D4	2	62041	WASHERLOCKSPRSJ.0008
27	C4	4	08040445	SCREWSL0008320025RNDHD
26	C4	1	20170	PIPE PLUG (1/2-14 NPT SOC HD)
25	D4	2	08040148	INSULATOR (LIMIT SWITCH)
24	D4	1	08040139	INSULATOR (LIMIT SWITCH)
23	C3	1	08040138	WHITE WIRE (LIM. SWITCH COMMON)
22	C3	2	08040137	BLUE WIRE (LIMIT SWITCH N.O.)
21	C3	2	08040136	RED WIRE (LIMIT SWITCH N.C.)
20	B2	7	82123	SCREWSL0008320038P-ANHDP-LTD
19	B2	1	08040107	BUSHING (BOSTON #FB57-4)
18	B2	1	08040106	BUSHING (BOSTON #FB46-4)
17	D2	1	08040098	BUSHING (BOSTON #FB46-4)
16	B4	1	08040097	BUSHING
15	D4	1	08040135	GASKET (LIMIT SWITCH COVER)
14	D4	1	08040096	COVER (LIMIT SWITCH HSG)
13	C3	2	08040620	SCREWSL0008320062RNDHDPHLLIPS
12	C3	1	08040109	TERMINAL STRIP MARKER (L/S)
11	C3	1	08040108	TERMINAL BLOCK (LIMIT SWITCH)
10	D4	1	08040093	BRACKET
9	D4	1	08040092	SWITCH BRACKET
8	D3	4	18040004	SCREWSL00040400063P-ANHDPHLLIPS
7	D3	2	E18030056	ELSMCR071C17D844-429
6	D4	2	08040110	CAM (LIMIT SWITCH)
5	D3	1	08040099	CAM (DRIVE SCREW)
4	D2	1	08040621	SCREWS00060000078P-ANHDPSELFTAP
3	D2	1		See Chart
2	B2	1		See Chart
1	D2	1	08040095A	LIMIT SWITCH HSG. (MF08040094)

PARTS LIST

JOYCE/ DAYTON CORP.
 Dayton, Ohio U.S.A. 45401

Assembly, Limit Switch

ITEM NUMBER	RATIO	MAX. NUMBER OF TURNS	WORM NUMBER	GEAR NUMBER
E08040111	10:1	700	08040100	08040101
E08040112	20:1	1400	08040102	08040103
E08040113	40:1	2800	08040104	08040105

DIMENSIONS ARE IN INCHES
 UNLESS OTHERWISE SPECIFIED
 DEC. PLCS. TOLERANCE
 1 PLCS. .1
 2 PLCS. .05
 3 PLCS. .010
 4 PLCS. .005
 ANGULAR 1
 MACHINED SURFACES
 BREAK CORNERS (RPTD.)
 DO NOT SCALE DRAWING

THIS DOCUMENT AND THE DATA DESCRIBED HEREIN OR HEREINTO IS NOT TO BE USED FOR ANY OTHER PURPOSE WITHOUT THE PERMISSION OF JOYCE/DAYTON CORPORATION.

SCALE FULL

DATE 02/27/04

SIZE 4M149

APPX WT 08040292

SHEET 1 OF 1