



SA HEAVY DUTY SOLAR ACTUATOR

Joyce Solar Actuators are specifically designed for positioning applications related to the solar industry. Their robust and efficient DC motor (24V or 36V) keeps power consumption to a minimum. Travel speeds remain nearly constant regardless of the load.

Ideal for rugged environments common to the solar industry, these SA solar actuators have an IP65 protection rating. Self-locking features in the mechanism ensure that the solar actuators can be held in position throughout the daily tracking cycle.

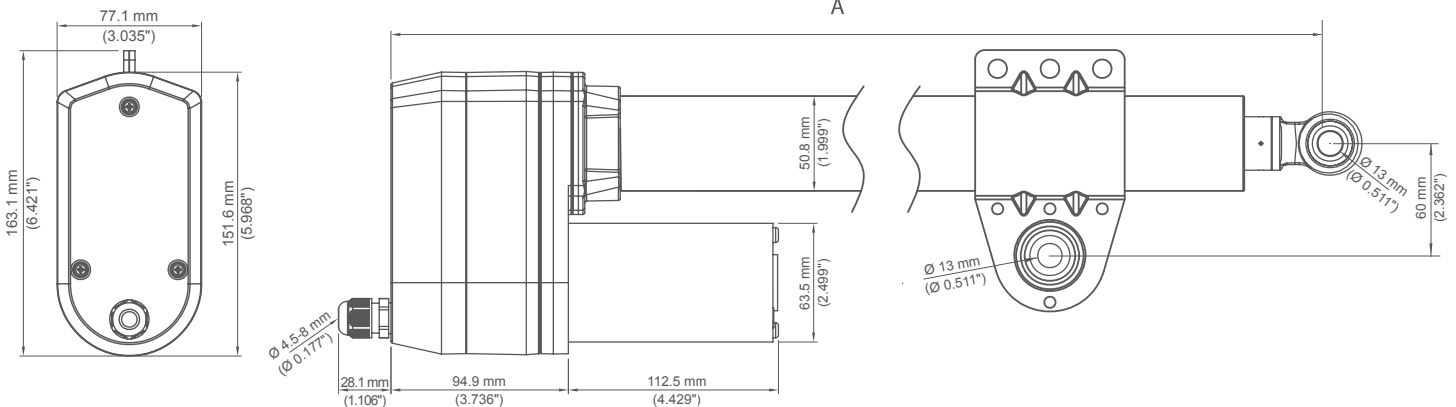
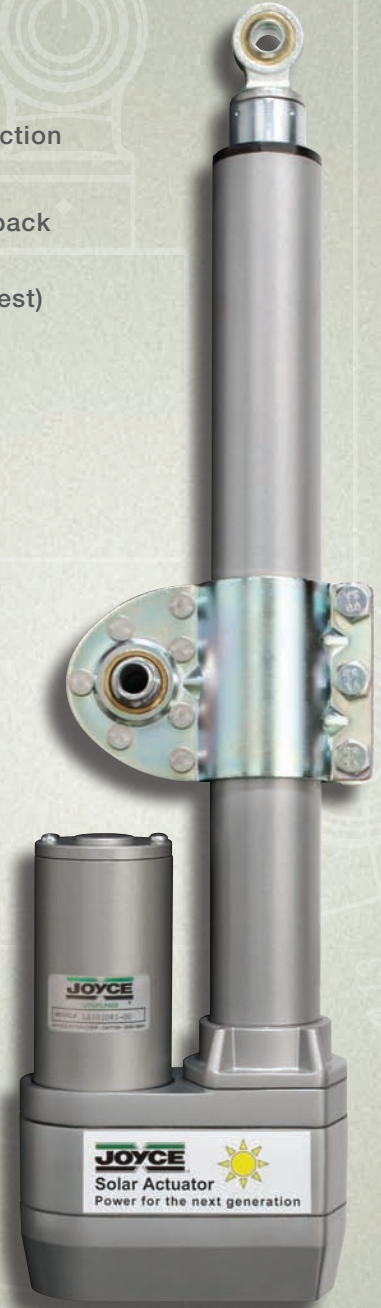
Each solar actuator is lubricated for life and includes an adjustable clevis that allows the unit to be appropriately positioned for the particular application.

SPECIFICATIONS

- Double clevis mounting
- Clutch for overload protection
- Adjustable limit switches
- Reed sensor digital feedback
- Duty cycle is 25%
(4 min. running, 12 min. rest)
- Working temperature
-25 °C to 65 °C
(-13 °F to 149 °F)
- Rated at IP65 protection
- Powder metallurgy gears
- Lubricated for life

OPTIONS

- Three stroke lengths:
450 mm (18")
600 mm (24")
900 mm (36")
- Available in 24VDC
or 36VDC



SA

HEAVY DUTY SOLAR ACTUATOR by Joyce/Dayton



Capacity

Solar Actuator	SA 55	SA 90
Dynamic Load	5500 N (1200#)	9000 N (2000#)
Static Load	13600 N (3000#)	17100 N (3800#)

Dimensions

Model	Stroke	"A" Retracted
SA 55	450 mm (18")	764 mm (30.1")
	600 mm (24")	917 mm (36.1")
	900 mm (36")	1269 mm (50.0")
SA 90	450 mm (18")	810 mm (31.9")
	600 mm (24")	963 mm (37.9")
	900 mm (36")	1315 mm (51.7")

Ordering Information

Type	Capacity	Voltage	Mount	Stroke
SA	55 (5500 N)	24	C (clevis)	450/600/900
		36		
	90 (9000 N)	24		
		36		

Ordering Example: **SA5524C900**

Typical Performance Characteristics

